

# Niue Pacific Adaptation to Climate Change (PACC) Project.

10<sup>th</sup> – 14<sup>th</sup> May 2010, SPREP HQ, Samoa

“Rainwater Harvesting Activities and Updates”

*Presented by Haden Talagi  
PACC Project Coordinator  
Department of Environment  
Niue Island*

# Outline

- Background
- Institutional Arrangement
- Component 01: Policy & Mainstreaming
- Component 02: Demonstration Measures
- Component 03: Tech. Backstopping & Lessons Learnt
- Component 04: Project Management Unit (PMU)
- Key issues and challenges
- Overall Summary

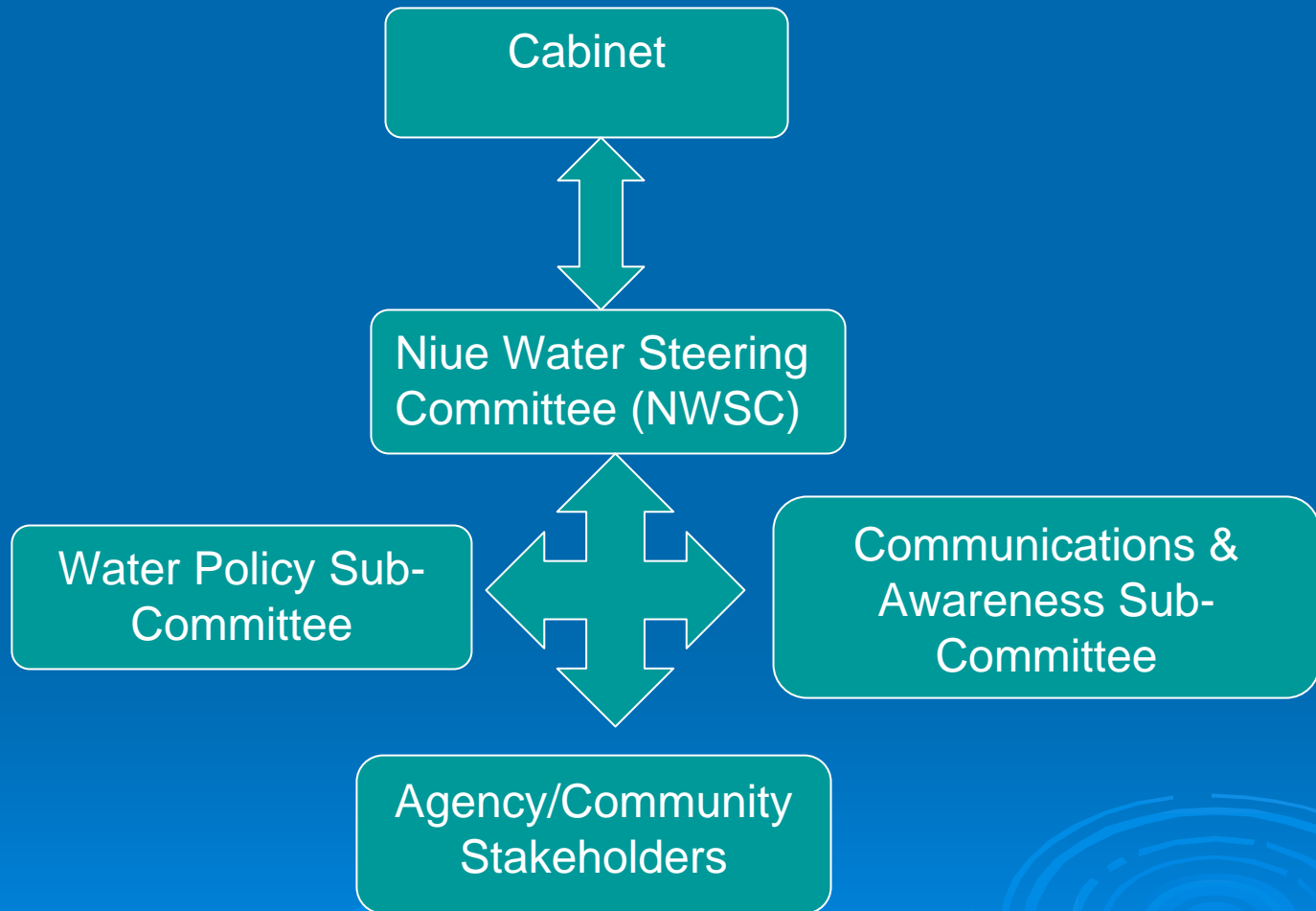
# Background

- Focus on the best way to provide water-catchment systems to every household on Niue.
- Urgent need to address vulnerability to Natural disasters, drought and also power cuts. Adequate backup system (water).
- Water resources and supply in Niue comes from groundwater source and limited rainfall catchments.
- Outcomes from existing reports, strategic plans, assessments for Niue. (Initial National Comm. to UNFCCC, SOE, NEMS, NBSAP, UNCBD, UNCCD, WSSD, NCSA, Niue MDGs, NISP 2009-2013, CROP agency consultations SOPAC assessments etc)

# Institutional Arrangement

- The PACC project and IWRM project is managed by Niue Water Steering Committee (NWSC).
- PACC project implemented by Department of Environment and the GEF/IWRM project implemented by Public Works Department (Water Division).
- The EU-funded Water Support Officer would provide linkages between both projects.(EU/IWRM)
- PACC Inception Workshop Aug.2009.

# Institutional Arrangement



# Component 01: Policy & Mainstreaming

- Climate Change Policy consultations.
- Climate Change Policy Endorsed by Cabinet in QRT 01 2010.
- Jointly implemented by SPREP/SOPAC with The Department of Environment as the lead agency in Niue.
- Water Policy sub-Committee Established and endorsed by the NWSC and Cabinet. (Support from PACC Project, GEF-IWRM & EU-IWRM) looking at the water-sector.

# Component 02: Demonstration Measures

- (Current) Costings of the whole “package” to determine funding needs and the role “households” will have to contribute. (Guttering, down-pipes, first-flush devices etc)
- (Current) Design and resource needs of the rainwater catchment system.
- (Current) Baseline Studies/Assessments (field) for Demonstration Sites.
- V & A Training with SEI & IISD using CRISTAL-software and Climate-Change-Explorer models.
- Communications, Public Awareness and Community Support for more “visibility”
- Technical advice by PACTAM/AUSAid Officer based in Niue.

# Component 03: Technical Backstopping & Lessons Learnt

- Communication Strategies for community activities and support. Need to document and capture lessons.
- Gap analyses of past and existing reports. Working with IWRM Project.
- Tools from SEI & IISD consultants.
- Uncertainty with SNC project?



# Component 04: Project Management Unit (PMU)

- PMU setup and procurement.
- Ongoing (reporting) Quarterly Financials & Activities to UNDP/SPREP.
- Working arrangements with other Stakeholder Agencies.

# Key Issues and Challenges

- Understanding and maintaining interest in Climate Change (over-consulted without seeing any benefits)
- Project Management (AWP 2010) gap analyses to avoid duplication with IWRM and other assessments by CROP agencies. Affects AWP 2010 for PACC.
- Financial Reporting (FACE-forms); Reporting different Exchange Rates, receiving/tracking funds.
- Urgent need for consistency in the transfer of funds and the tracking of funds as we are getting bits of money but PMU were not aware.
- Beneficial? For households to provide cash contribution to hardware procurement under the project. (EU solar & gas project)
- Understanding Tender process and procurement process (water-tanks)

# Overall Summary

- MOU signed with SPREP
- National Water Steering Comm. Established and endorsed by Cabinet.
- PMU established .
- Climate Change Policy Endorsed by Cabinet
- Steps towards a National Climate Change Action Plan.
- Water Policy Sub-Comm. Established to address water sector issues incl. Water Policy, Water Act *et al.* TOR endorsed by NWSC.
- Ongoing Community Awareness Activities and support.
- Need to work with Treasury to improve the delivery of Financials.

# Thank you....

Niue Water Steering Committee (PACC & IWRM Projects)

PACC Project manager:

Sauni Tongatule

PACC Project Coordinator:

Haden Talagi

PACC Project Technical Adviser:

Clinton Chapman