



FIJI COUNTRY STATEMENT



PACIFIC ADAPTATION TO CLIMATE CHANGE



MULTI PARTITE REVIEW
MEETING, APIA
10TH – 14TH MAY



Ministry of Primary Industries
Department of Agriculture
Land & Water Resource Management Division



OUTLINE



- SUMMARY STATEMENT
- FINANCIAL REPORTING
- PROJECT MANAGEMENT & INSTITUTIONAL ARRANGEMENTS
- MAINSTREAMING
- PILOT DEMONSTRATION
- CAPACITY GAPS,NEEDS & TECHNICAL SUPPORT
- CO-FINANCING
- LOG FRAME
- LESSON LEARNT
- CHALLENGES



FIJI PACC PROJECT



• SUMMARY

The implementing agency Land and Water Resource Management Division faced the challenges of three (3) consecutive natural disasters, the floods in January and Cyclone Mick in December, 2009 and Cyclone Tomas, March 2010 which redirected its resources and focus towards flood rehabilitation works. Coupled with government reforms in downsizing, the Division also had to undergo realigning and redeploying of resources .

Problems faced in the release of funds from RBF and Finance led to delays in the recruitment of the project co-ordinator and as a result delays in progress of the demonstration project.

➤ Inception and Co-financing activities undertaken



FIJI PACC PROJECT



- **FINANCIAL**
 - DELAYS IN PROGRESS OF THE PROJECT
 - PROJECT CORDINATOR POST APPROVED IN OCTOBER,2009
 - FUNDS TRANSFERRED IN OCT & DEC 2009, PROCESSING VIA RBF AND FINANCE DELAYS
 - CLEARANCE AND ACKNOWLEDGEMENT FROM FINANCE RECEIVED APRIL,2010



FIJI PACC PROJECT



- **PROJECT MANAGEMENT & INSTITUTIONAL ARRANGEMENTS**

- **IMPLEMENTING AGENCY LWRM DIVISION**
- **PROJECT MANAGER RECRUITED – MAY, 2010**
- **PROJECT ASSISTANT-TECHNICAL SUPPORT**
- **CLIMATE CHANGE COUNTRY TEAM**
DO Env - MTG HELD 23rd APRIL TO REVIVE.
- **INTEGRATED RURAL DEVELOPMENT**
FRAMEWORK -2009



FIJI PACC PROJECT



•MAINSTREAMING

- DEVELOPMENT SUB COMMITTEE INFORMATION PAPER - CABINET PAPER SUBMITTED –Feb 2010
- NATIONAL CLIMATE CHANGE TEAM
 - Revive the defunct Climate Change Country Team;
 - Discuss outcomes from Copenhagen Meeting
 - Discuss domestic and international climate change activities; and
 - Discuss possible membership and terms of reference for the CCCT
 - Outcome need to review policy
- LEGISLATION REVIEW
- LAND CONSERVATION ACT
 - ❖ DRAINAGE ACT



FIJI PACC PROJECT



•PILOT DEMONSTRATION

- CONSULTATION WITH DISTRICT ADMINISTRATION TO ENGAGE COMMUNITY, DISTRICT ADVISORY COUNCILORS
- CONSULTATION CROP EXTENSION , RESEARCH, ANIMAL HEALTH & PRODUCTION
 - DEMONSTRATION FARMS
- TOR FOR CONSULTANTS TO REVIEW AND DEVELOP DRAINAGE CRITERIA & GUIDELINES `
- NATIONAL AGRICULTURE SHOW JULY,2010
- “FEED FIJI FIRST : GO LOCAL”



FIJI PACC PROJECT



•CAPACITY GAPS AND NEEDS TECHNICAL SUPPORT

- MAINSTREAMING -DEPT OF ENVIRONMENT
 - ❖ NCSAP
 - ❖ United Nations Convention for Biological Diversity (UNCBD), the United Nations Framework Convention on Climate Change (UNFCCC), and the United Nations Convention to Combat Desertification (UNCCD).
- TECHNICAL – ENGINEERING SUPPORT
- WORKSHOP - NATIONAL LEVEL
 - ❖ AWARENESS
 - ❖ MAINSTREAMING-ACTIVITIES & PROCESS



FIJI PACC PROJECT



- **GOVERNMENT CO-FINANCING**

- **LAND DRAINAGE & FLOOD PROTECTION**

- **2009 – US \$250,000**

- **DRAINAGE NETWORK**

- ❖ 182KM DRAINS
- ❖ 4.5KM CREEKS AND WATERWAYS
- ❖ 1.5KM NEW DRAINS

- **INFRASTRUCTURE REHABILITATION**

- ❖ 1NO FLAPGATE STRUCTURE
- ❖ 4NO FLOODGATE DOORS
- ❖ 2 NO CULVERT CROSSING

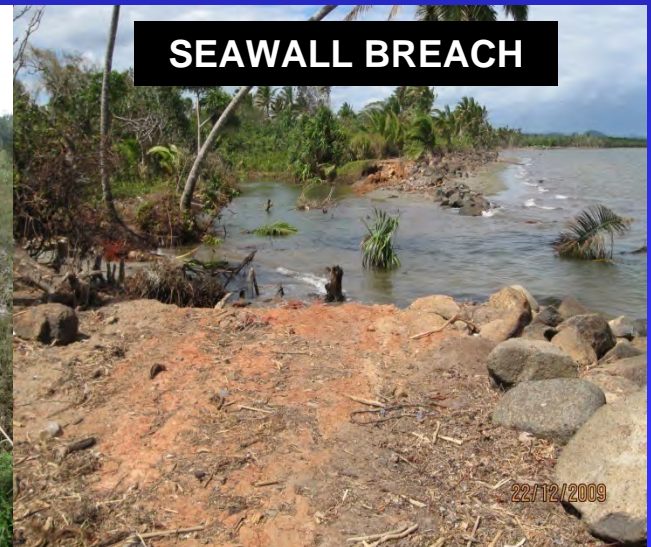
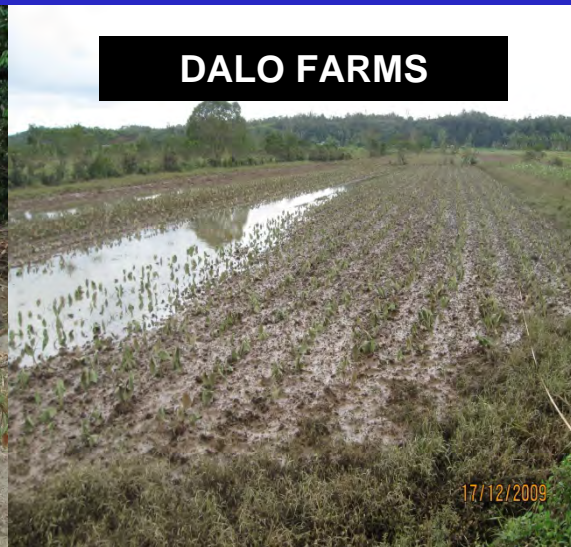
- **CYCLONE MICK – DEC,2009**



CYCLONE MICK-2009



- DRAINAGE NET WORK – US \$137,000
- INFRASTRUCTURE – US \$245,000
- CROP DAMAGE - US \$3.4MILLION





FIJI PACC PROJECT



- **GOVERNMENT CO-FINANCING SUPPORT**

- 2010 – US \$270,496

- **DRAINAGE NETWORK**

- 153 KM DRAINS
- 1KM CLEARING CREEK
- 0.7KM NEW DRAINS

- **INFRASTRUCTURE WORKS**

- 3KM SEAWALL
- 1NO FLOODGATE STRUCTURE
- 4NO FLOODGATE DOOR
- 2NO CULVERT CROSSING
- 1NO PIPE CULVERT



FIJI PACC LOGFRAME



| Design Summary | Performance Indicators/Targets | Monitoring Mechanism | Assumption & Risks |
|---|--|-----------------------------|---|
| Goal To increase the resilience and enhance the adaptive capacity of food production and food security in Fiji | A high level of climate change adaptation reflected through an integrated approach to enhancing climate resilient systems based on sound reliable data, an enabling policy and financial framework, community engagement, and increased technical and institutional capacity | Climate Change Country Team | Significant changes in enabling environment including but not limited to political and financial stability, political commitment and changes in legislation and policy |
| Purpose/Outcome Sustainable community livelihood through demonstrating climate change risk reduction in lowland farming areas to adapt to future and extreme rainfall regimes | Drainage criteria and guidelines integrated into management and institutional planning framework and mainstreaming into policy and national planning | Climate Change Country Team | Reliant on co financing activities, assumes sufficient information is available, that complex systems can be simplified to provide meaningful results, adequately skilled people can be attracted and retained , local stakeholders adopt adaptation measures |



FIJI PACC LOGFRAME



| Ouputs | Performance Indicators/Targets | Monitoring Mechanism | Assumption & Risks |
|---|--|--|---|
| Quality of land in the pilot area improved through better drainage and sea defence | Drainage network and infrastructure improvements | Evaluation Reports Field Surveys | Reliant on co financing activities, assumes sufficient information is available, that complex systems can be simplified to provide meaningful results, adequately skilled people can be attracted and retained , local stakeholders adopt adaptation measures |
| Increased agricultural activities through better community participation and understanding of changes in climate change | Community participation and capacity building mainstreamed and implemented in practice | Awareness raising campaigns, targeted workshops and development of tool kits addressing capacity gaps | |
| Appropriate agronomy practices on low lying areas developed to address climate change | Community participation, crop package of practices mainstreamed and implemented in practice | Awareness raising campaigns, targeted workshops | |
| Current and future designs of drainage and sea defence enhanced through better understanding of current and future changes in climate | Scientific and technical studies undertaken to support the development and implementation of drainage guidelines | Technical Report | |
| Enhanced awareness and education campaigns to address climate change adaptation issues | Publications and educational materials developed supporting adaptation issues | Publications and educational materials PACC website developed with links to other climate change related projects in Fiji | |
| Sharing of lessons learnt | Dissemination of information developed in the pilot areas | | |



LESSON LEARNT



- Need for information on financial transactions to fast track clearance from Central Agency
- Integrated rural framework strengthens institutional support for delivery of project



CHALLENGES



- Limited knowledge on how to implement project inception stage at the national level
- National mainstreaming climate change for Government Ministries; Departments
- Knowledge management is weak or not yet in place
- Networking arrangements not well established
- Competing demands - PACC, IWRM, FAO



■ VINA KA

■ THANK YOU FOR YOUR ATTENTION